

---

## *SETUP GUIDE:* MOON USB HD DSD Driver

---

MOON Nēo 230HAD

MOON Nēo 340i D<sup>3</sup>

MOON Nēo 380D DSD

MOON Evolution 780D

MOON Nēo 280D DSD

MOON Nēo 350P D<sup>3</sup>

MOON Nēo 430HA

MOON Nēo ACE

---

---



M O O N

Musical Ecstasy

## USB HD DSD Driver v1.0.57

Filename: MOON\_USB\_HD\_DSD\_Audio\_Setup\_1.0.57.zip

Applicable Models: MOON Nêo 230HAD  
MOON Nêo 340i with D<sup>3</sup> DAC  
MOON Nêo 380D DSD  
MOON 780D

MOON Nêo 280D  
MOON Nêo 350P with D<sup>3</sup> DAC  
MOON Neo 430HA with DAC

Function: Allows the DAC's USB input to accept Hi-Resolution audio files including DSD & DSX

Installation of this software is required to accomplish a USB connection with both DSD and 32-bit/384kHz performance between your computer and your MOON 380D DSD DAC or MOON 430HA's optional DAC. As well, there are certain configuration requirements for your music playing software. There are 2 required drivers: the "MOON USD HD DSD Driver" and the "MOON USB HD DSD ASIO Driver" which are installed onto your computer in a one-step installation procedure. Make sure that your MOON component is connected to your computer with a USB connection during the entire installation procedure

If you are using a MAC OS-X (v10.6.4 or higher) based computer, you do not need to do any of the following since your operating system provides native support for the USB interface - it is already equipped to realize the maximum potential of this interface for digital audio playback.

### Installation:

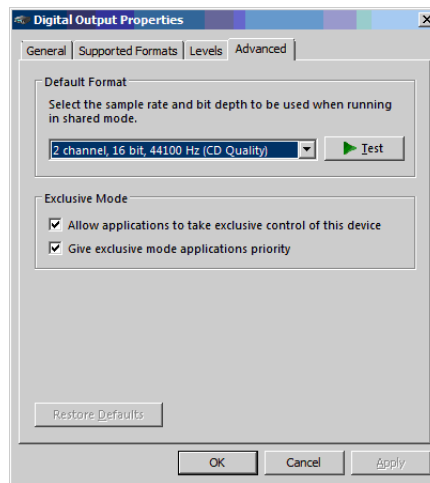
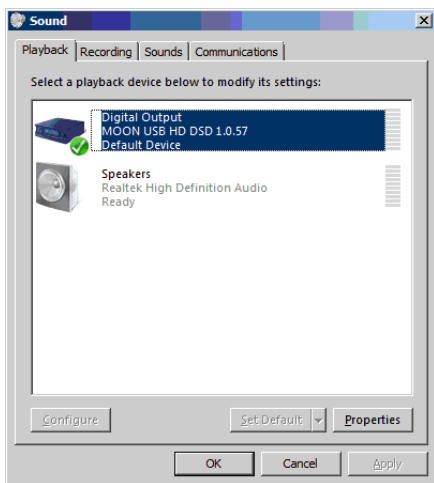
For all versions of Windows, run the following file: **MOON\_USB\_HD\_DSD\_Audio\_Setup\_1.0.57.exe**

Follow the on-screen installation instructions until you reach the "Completing the MOON USB HD DSD Audio Setup Wizard" dialog box and click "Finish". Then you must configure several windows Control panel settings. **Make sure that your MOON DAC is connected to your computer via USB.**

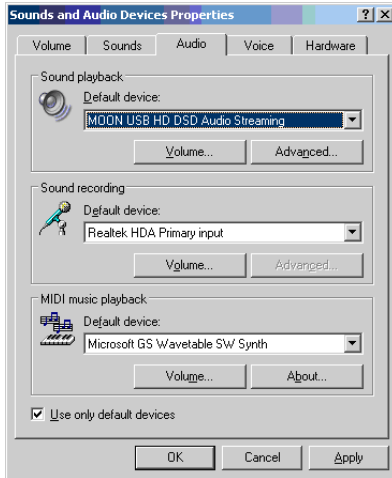
Note: If you have previously installed our "USB HD Driver" (non DSD), you do not need to uninstall it from your computer before proceeding with the installation of this "USB HD DSD Driver".

### Confirmations

*Windows Vista, 7 and 8:* The "Sounds" section of the windows "Control Panel" should appear like the image to the lower left, showing the "Digital Output: MOON USB HD DSD" driver as the default playback device. Click on the "Properties" button in the lower right and you see a dialog window similar to the image on the right, where both "Exclusive Mode" options should be checked on:

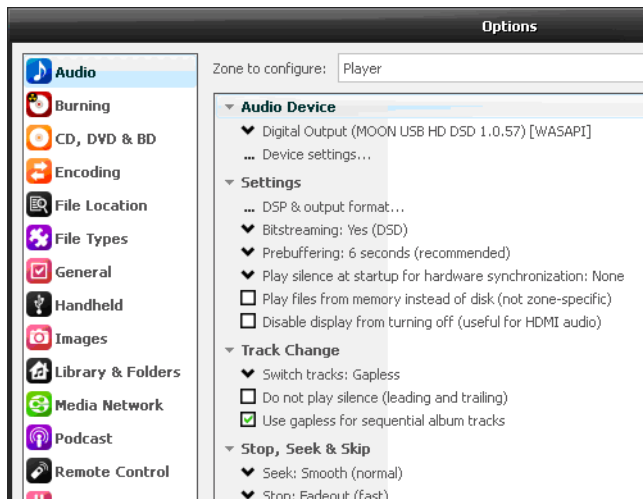


Windows XP: The Sounds and Audio Devices section of the windows Control Panel should appear like the image below, showing the Default Device for Sound Playback is “MOON USB HD DSD Audio Streaming”

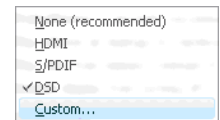


### J-River Media Center settings

To play DSD files with J-River Media Center, you will have to change several settings in the “Tools” → “Options” section. For “Audio Device” you must select the “MOON USB HD DSD {WASAPI} as shown below



Then you must make the following changes for DSD Support in the Settings section for “Bitstreaming”: Select the “Custom” option and a new dialog box will appear, where you must check-off the DSD box.



Click “OK” and then exit the “Options” dialog menu. **Now you are ready to play DSD files**

